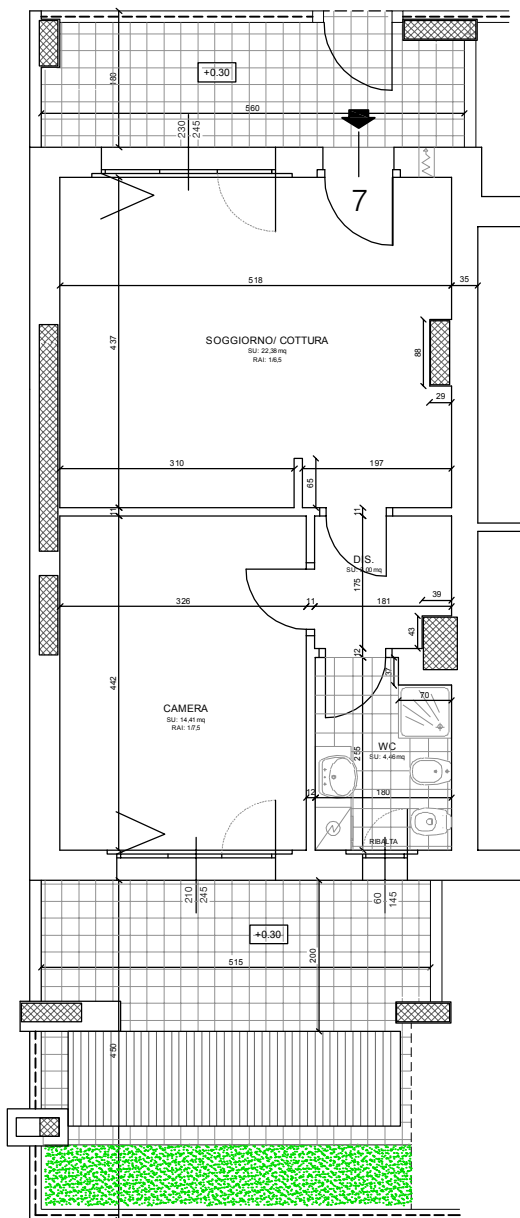
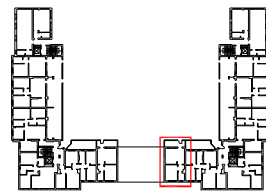


INDIVIDUAZIONE PLANIMETRICA APPARTAMENTO N. 7



PIANO TERRA

Sup. appartamento:	55,97 mq.
Sup. portici:	21,23 mq.
Sup. giardino:	12,63 mq.



IMMOBILIARE OASI S.r.l.

EDIFICIO: VIA TORRES - VIA DON STURZO, SARONNO
 UNITA' N. 7 - PIANO TERRA

UNITA':

7

SCALA DISEGNO: 1:100

