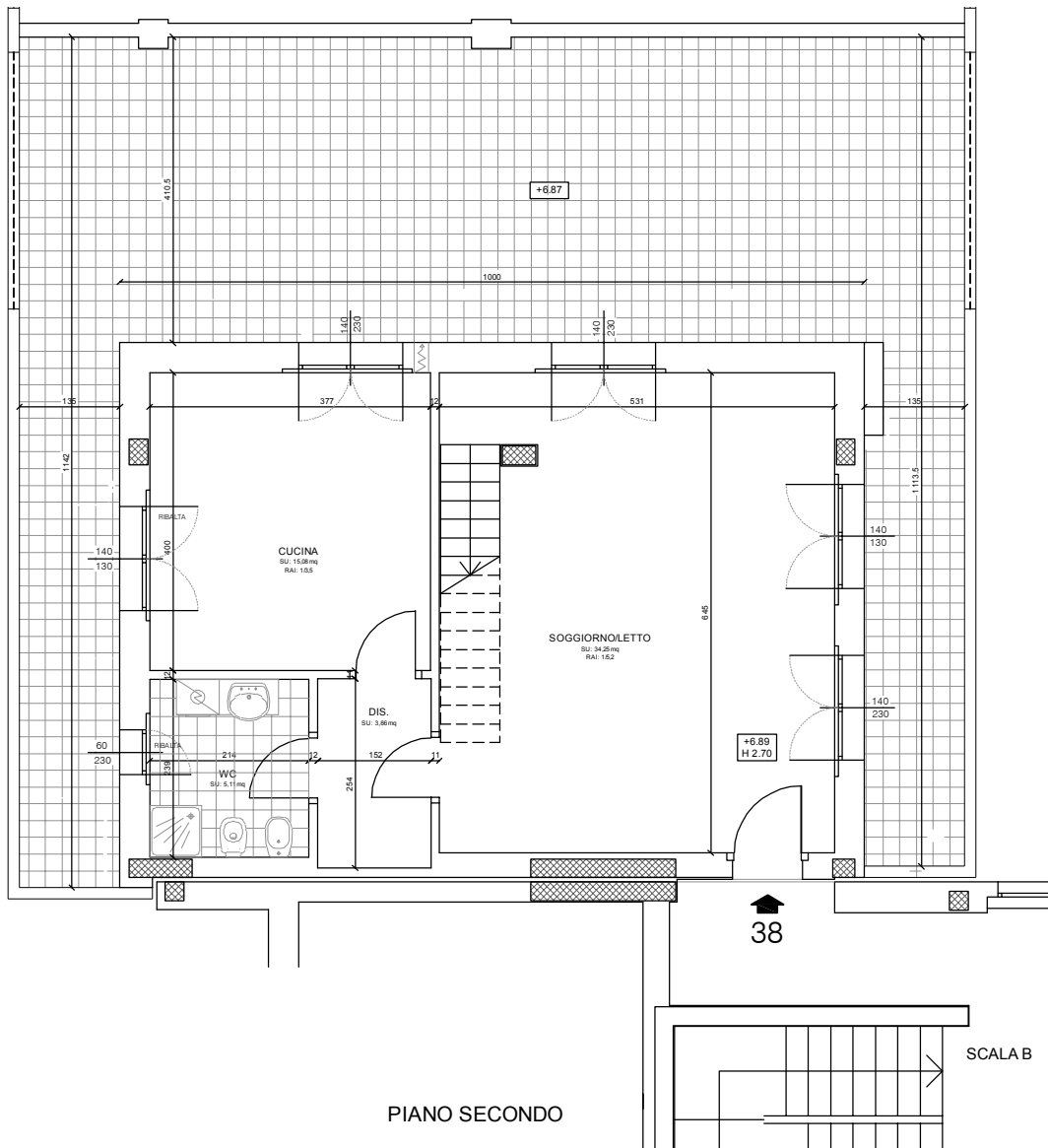
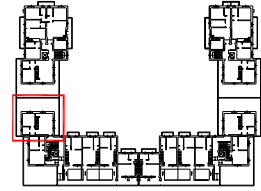


INDIVIDUAZIONE PLANIMETRICA APPARTAMENTO N. 38



Sup. appartamento: 72,28 mq.
 Sup. sottotetto: 72,38 mq.
 Sup. balconi/terrazzi: 76,50 mq.



IMMOBILIARE OASI S.r.l.

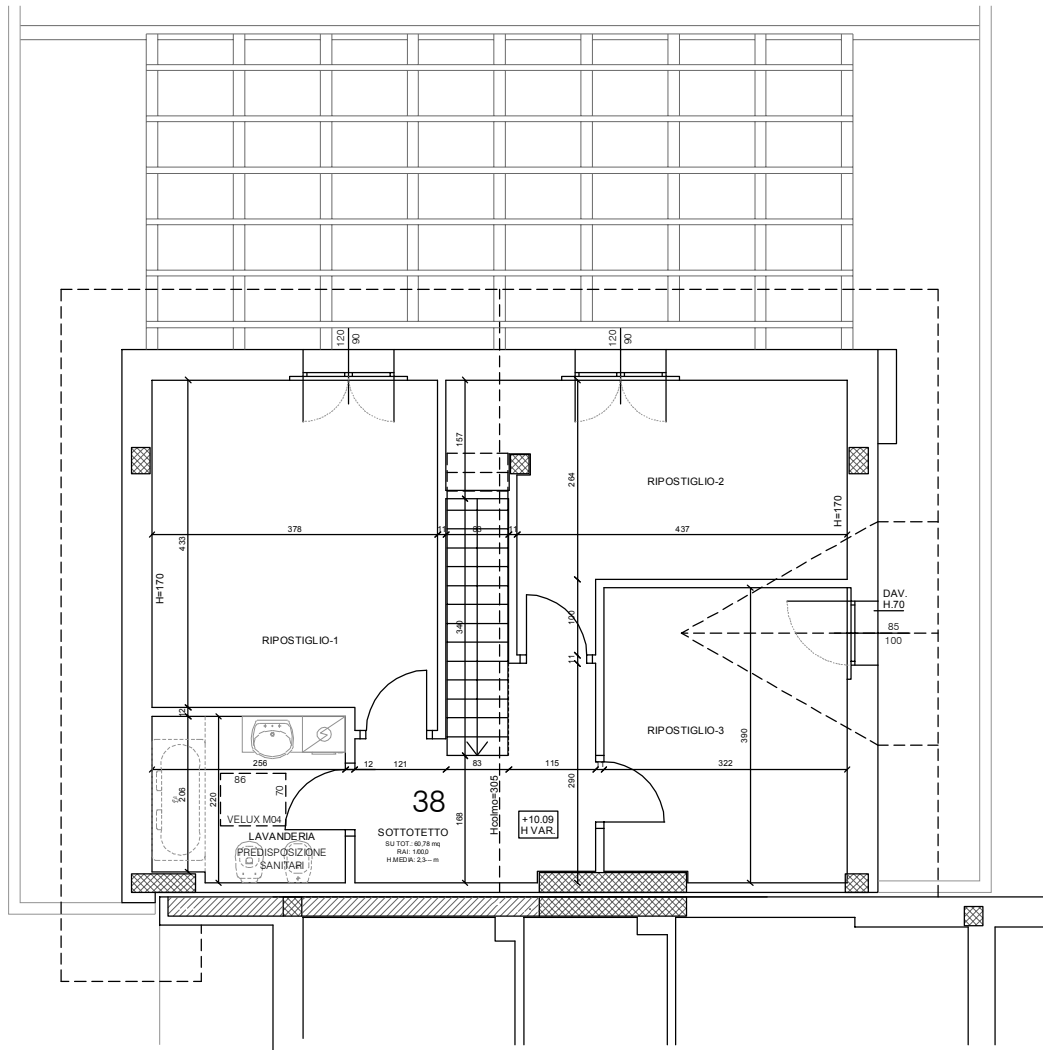
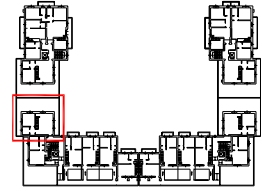
EDIFICIO: VIA TORRES - VIA DON STURZO, SARONNO
 UNITA' N. 38 PIANO SECONDO E TERZO

UNITA':
38

SCALA DISEGNO: 1:100

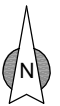


INDIVIDUAZIONE PLANIMETRICA APPARTAMENTO N. 38



PIANO TERZO

Sup. appartamento: 72,28 mq.
Sup. sottotetto: 72,38 mq.
Sup. balconi/terrazzi: 76,50 mq.



IMMOBILIARE OASI S.r.l.

EDIFICIO: VIA TORRES - VIA DON STURZO, SARONNO
UNITA' N. 38 PIANO SECONDO E TERZO

UNITA':

38

SCALA DISEGNO: 1:100

